

Veluvana Typeface

A B C
D E F G H I
K L M N O P Q R S T
U V W X Y Z A B C D E
F G H I J K L M N O P Q R S T
U V W X Y Z A B C D E F G H I
K L M N O P Q R S T U V W X Y Z

SMALL CAPITALS &
CAPS TO SMALL CAPS

Underline Strikeout

À ç è è ò ò ò Symbols

► ¨ ~ * * * † A Ψ Δ Υ Λ Φ

Greek α β γ δ ζ η κ λ

Super 456 Sub 789 H₂O
F€£¤¥¦§¨ª«¬®¯°±²³´µ¶·¸¹º»¼½¾
TEL i FAX 1/3 1/5 a/b 1/32 " 3/64

① ② ③ ⑦ ⑧ ⑨ ⑩

Enclosed

(liga): off fit fij ij fly office affliet

(dlig): The twist shoek satisfy Quip

transforms kunststoffflugzeug to
plastie aircraft HELP MEN FIT TWO

LAPPS UP and

(hlig): The auspicious way if straight.

Default Figures: £12,345,678.90

OldStyle Figures: £12,345,678.90

Ordinals: 1st 2nd 3rd 4th 16^{ths} 1^{ème}

In Nova Fert animus
quem mutatas dicere
formas coeptis (nam vos
et illas) adspirare meis
origine mundi ad tempora
carmen! (16)

Ante mare et terras et quod tegit
omnia caelum unus erat toto
naturae vultus in orbe, quem dixere
chaos: rudis moles nec quiequam nisi
pondus iners congestaque eodem non
bene Quinetarum discordia semina.
(12)

NULLUS adhuc mundo praebat lumina
Titan, nec nova erecundo reparabat
cornua Phoebae, nec circumsusus pendebat in
aere tellus ponderibus librata suis, nec
braechia margine terrarum porregerat.
Amphitrite; utque erat et tellus illie et pontus
et aer, sic erat instabilis tellus, innabilis
unda, lueis egens aer; nulli sua forma
manebat, obstabatque aliis aliud, quia
corpore in uno frigida calidis, umentia sieeis,
mollia duris, sine pondere, habentia pondus.
(10)

HANC DEUS et melior litem natura diremit.
Nam caelo terras et terris abscheidit undas et
liquidum spisso seerevit ab aere caelum. Quae
postquam evoluit eaeoque exemit aervo,
dissociata locis coneordi pace ignea convexi vis et
sine pondere caeli emieuit summaque loeum sibi
fecit in aere; proximus est illi levitate locoque;
densior his tellus elementaque grandia traxit et
pressa est gravitate sua; circumfluus umor ultima
possedit solidumque coerevit orbem. (9)

Sie ubi dispositam quisquis fuit ille deorum
seongeriem sequit seetamque in membra coegit,
prineipio terram, ne non aequalis ab omni parte
foret, magni speciem glomeravit in orbis. (8)

Tum freta diffundi rapidisque tumescere ventis iussit et ambitae circumdare
litora terrae: addidit et fontes et stagna immensa laeusque fluminaque
obliquis cinxit declivia ripis, quae, diversa locis, partim sorbentur ab ipsa,
mare partim eamque recepta liberionis aquae pro ripis litora pulsant. (6)

ussit et extendi campos, subdidere vallis, fronde tegi silvas, lapidoas surgere montes, utque duae dextra
caelum totidemque sinistre parti spicant zones, quinta est antecitor illis, sic anag inclusas numero digitata
eodem aura dqi, totidemque plagae tellure praesentur. Quantum quae media est, non est habitabilis, aeterni
tegit alia duae totidem inter utramque locavit temperantque dedit mixta cum frigore flamma. (4)

3/1/2017 - Version 3.20

The archive includes smaller web versions
without most of the symbols in both *.otf and
compressed *.woff formats.

Veluvana was designed
for decorative text. Line
spacing for 10 point text
is 12 points. There is only

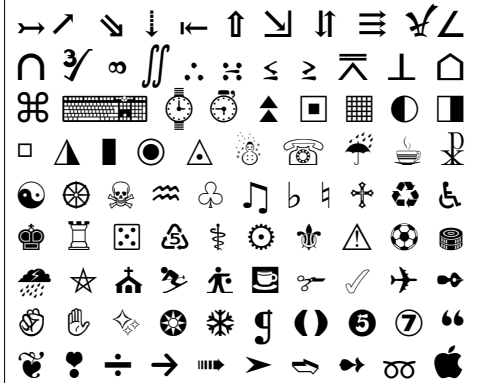
Regular
Italic (synth)
Bold (synth)
Bold Italic (synth)

a regular type style, so don't apply bold or
italic attributes, otherwise Windows will
synthesise styles, which will bloat PDF files.

A basic Greek character set, and a wide
range of symbols extend its usefulness to
other academic fields such as maths and
science.

Superscripts align with the tops of figures,
and subscripts bisect the baseline. There are
ordinals for both lowercase 1st, 2nd, 3rd,
1^{ème} 2^e, 3^ú, 16^{ths} and for Caps 1^{ÈME} 2^O 3^Ú
3Rd 25TH etc.

The font includes a full set of arrows,
symbols, dingbats, and stacking fractions for
measurements: 7⁸⁸ or ⁸/₃ etc. A selection of
the many symbols included is shown below:



Some dingbats can be accessed using the
Ornaments feature. Type 123 ABC etc., to
get: ①②③④⑤⑥⑦⑧⑨⑩ ✕ ✕ ✕ ✕ ✕ ✕ ✕ ✕ ✕ ✕ ✕ ✕

+†‡§¨ª«¬®¯°±²³´µ¶·¸¹º»¼½¾
***** *!*! *! *! *! *! *! *! *!
Chess: ♔ ♕ ♖ ♗ ♘ ♙ ♚ ♛ ♜ ♝ ♞ ♟

Stylistic Alternate Sets give quick access to
a few symbols from the text context toolbar.



Chess: wk wq br bb etc.

