

# Pali Typeface

ABC  
DEFGH  
IJKLMNOP  
QRSTUVWXYZ  
ABCDEFGHIJKLM  
NOPQRSTUVWXYZ  
ABCDEFGHIJKLMN  
OPQRSTUVWXYZ  
ABCDEFGHIJKLMN  
OPQRSTUVWXYZ

## Bold *Bold Italics*

Regular *Italics*

PETITE CAPITALS

[PETITE CAPS FROM CAPS]

SMALL CAPITALS

{SMALL CAPS FROM CAPS}

Underline ~~Strikeout~~

Àççèñtš ˆˆ~\*~\*~\* Symbols

ΑΥΔΥΛΦ Greek

αβγδζηικλ ρς

Ordinals 1<sup>e</sup> 2<sup>nd</sup> 3<sup>rd</sup> Sub789

£€ƒtsRsR€ŒŒtSTŒŒbŒŒPŒŒB

£ŒbTELŒx†‡ˆˆˆˆN<sup>o</sup>\*?ˆ~ 3/Δ≈.:

0/3 1/3 3/4 4/5 5/6 1/7 7/8 8/9 x-y/(a±b)

1/16 13/16 31/32 29/32 5/64 11/64 1 1/64 3 33/64

ivixxiIVXIDC↓@

(E)(N)(C)(L)(O)(S)(E)(D)

*kunststoffflugzeug to plastic*

*aircraft ff fi fij ij fb ffb fff ffk*

**Velthuis:** āiūdhllmñnsrřt

HE LA MB NK Œ Œ TT

f ff ft fti Œ ay œ VY vy

Old Style: £123,456.78

IN NOVA FERT animus  
mutatas dicere formas  
corpora; di, coeptis (*nam*  
*vos mutastis et illas*)  
adspirate meis  
perpetuum deducite  
tempora carmen! {16}

Ante mare et terras et quod tegit  
omnia caelum unus erat toto  
naturae vultus in orbe, quem  
dixere chaos: rudis quicquam  
nisi pondus iners congestaque  
eodem non bene iunctarum  
discordia semina rerum. {12}

**N**ULLUS adhuc mundo  
praebebat lumina Titan,  
nec nova crescendo  
reparabat cornua Phoebae,  
nec circumfuso pendebat in aere tellus  
ponderibus librata suis, nec brachia  
longo margine terrarum porrexerat ;  
utque erat et tellus illic et pontus et aer,  
sic erat instabilis tellus, innabilis unda,  
lucis egens aer; nulli sua forma  
manebat, obstabatque aliud, quia  
corpore in uno frigida pugnabant  
calidis, umentia siccis, mollia duris,  
sine pondere, habentia pondus. {10}

**H**ANC DEUS ET melior litem  
natura diremit. Nam caelo  
terras et terris abscondit undas et  
liquidum spisso secrevit ab aere  
caelum. In hac habitasse platea dictumst.  
Mauris rutrum enim vitae mauris. Proin  
mattis eleifend pede. {9}

**Sic ubi dispositam** quisquis fuit ille deorum  
congeriem secuit sectamque in membra coegit,  
principio terram, ne non aequalis ab omni parte  
foret, magni speciem glomeravit in orbis.  
Vivamus vel sapien. Praesent nisl tortor, laoreet  
eu, dapibus quis, egestas non, mauris. Cum sociis  
natoque penatibus et magnis dis parturient  
montes, nascetur ridiculus mus. {8}

Tum freta diffundi rapidisque tumescere ventis iussit et ambitae  
circumdare litora terrae; addidit et fontes et stagna immensa  
lacusque fluminaque obliquis cinxit declivia ripis, quae, diversa  
locis, partim sorbentur ab ipsa, in mare perveniunt partim  
campoque recepta liberioris aquae pro ripis litora pulsant. {6}

Version 2.80 replaces the Initial Forms feature with Stylistic  
Alternates and the former Stylistic Alternates are now Character  
Variants. These changes were necessary to avoid a problem  
caused by a significant change to the [description of Initial Forms](#)  
made by Microsoft. Initial forms are enabled by default and not  
meant to be exposed to the user, so they cannot be disabled in  
modern applications.

Version 3.42 • 5-6-2019

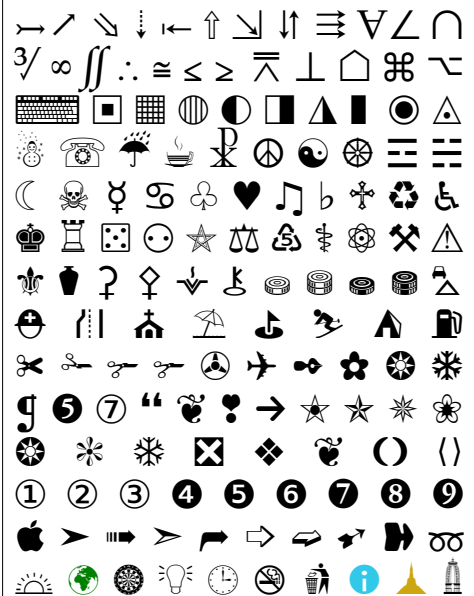
Pali is my version of Palatino, but with tighter copyfit. The default line spacing for 10 point text is 12 points instead of 13.5 points as in Linotype Palatino.

A full range of Latin characters make it ideal for Pali, Sanskrit, Romanised Indic scripts, nearly all European languages, and Vietnamese.

A basic Greek character set, and a wide range of symbols extend its usefulness to other academic fields such as Maths and Science. Currency and maths symbols are designed on the figure width, while other symbols, arrows, and geometric shapes are a uniform width and align with the Caps height wherever the design permits.

Petite Capitals and other OpenType features in the Private Use Area are available to older applications that don't support OpenType features.

The font includes a full set of ligatures and a wide range of arrows, symbols, and dingbats. A selection is below:



## Character Variants

cv ! \* + @ ~ † ‡ • © × ○ ● \*  
cv1 !! \* +@~†‡ • © × ○ ● ☀  
cv2 † ‡ +@~†‡ • © × ○ ● ☀  
cv3 † ‡ +TEL ≈ < > © × ○ ● ☀  
cv4 ! \* +FAX > ☀ ☀ ☀ ☀ ☀ ☀

## Chess Ornaments

