

Sukhumala Typeface

A B C
D E F G H I
J K L M N O
P Q R S T U V
W X Y Z A B C D E
F G H I J K L M N O P Q
R S T U V W X Y Z A B C
D E F G H I J K L M N O P Q R
S T U V W X Y Z A B C D E F G
H I J K L M N O P Q R S T U V W X Y Z

Bold • *Bold Italic*

Regular • *Italic* • Hand Tooled

PETITE CAPITALS ΕΛΛΗΝΙΚΑ

SMALL CAPITALS

ΕΛΛΗΝΙΚΑ

Underline ~~Strikeout~~

Āçćėñţş Symbols ▶ ◡ ~ * ✱ †

Greek: ΑΨΔΥΛΦ αβγδζηικλ

Super 123 Subscript 789 *sinf* H₂O

Ordinals: 1st 2nd 3RD 1^è 3^ú

ƒ€PτRšPϯ€τPϯ€BİbN°TELÉ

1/2 2/3 4/5 7/8 1/x 121/125 2 16" 32" 17"

Roman: IV IX C ii vi xi m

Tech: ☰ ☲ ☱ ☳ ☴ ☵ ☶ ☷

Ⓔ Ⓝ Ⓟ Ⓡ Ⓢ Ⓣ Ⓤ Ⓥ Ⓦ Ⓧ Ⓨ Ⓩ

OldStyle: oI23456789

(liga): *off fit fly afflict fjord*

fritter!? (dlig): *HELP TWO*

MEN FIT UP FOG LAMPS

The two sticky Ritz ask act fij ij

Quips satisfy (hlig): *Afiftrav*

The auspicious way if ftraight

(ssoi): āiūdhĭlĭmnñřřšt

[Velthuis encoding](#)

IN NOVA FERT
animus formas
corpora; di, coeptis
(*nam vos mutastis et illas*)
adspirate meis primaque
ab origine mundi ad mea
perpetuum deducite
tempora carmen! [16]

Ante mare et terras et quod tegit
omnia caelum unus erat toto
naturae vultus in orbe, quem
dixere chaos: rudis indigestaque
moles nec quicquam nisi pondus
iners congestaque eodem non
bene Qudiscordia semina. [12]

NULLUS adhuc mundo
praebat lumina Titan, nec
nova crescendo reparabat
cornua Phoebae, nec circum-
fuso pendebat in aere tellus ponderibus
librata suis, nec brachia longo utque
erat et tellus illic et pontus et aer, sic
erat instabilis tellus, innabilis unda,
lucis egens aer; forma manebat,
obstabatque aliis aliud, quia corpore in
uno frigida pugnabant calidis, umentia
siccis, mollia duris, sine pondus. [10]

HANC DEUS et melior litem
natura diremit. Nam caelo terras
et terris abscondit undas et spisso
secrevit ab aere caelum. Quae
postquam evolvit caecoque exemit acervo,
dissociata locis concordia pace ignea convexi
vis et sine pondere caeli emicuit summaque
locum sibi fecit in arce; proximus est aer illi
levitate locoque; densior his tellus
elementaque grandia traxit et pressa est
gravitate sua; circumfluvius umor ultima
possedit solidumque coercuit. [9]

Sic ubi dispositam quisquis fuit ille deorum
congeriem secuit sectamque in membra coegit,
principio terram, ne non aequalis ab omni parte
foret, magni speciem glomeravit in orbis. [8]

Tum freta diffundi rapidisque tumescere ventis iussit et ambitae
circumdare litora terrae; addidit et fontes et stagna immensa
lacusque fluminaque obliquis cinxit declivia ripis, quae, diversa
locis, partim sorbentur ab ipsa, in mare perveniunt partim
campoque recepta liberioris aquae pro ripis litora pulsant. [6]

Iussit et extendi campos, subsidere valles, fronde regi silvas, lapidosos surgere montes, utque duae
dextra caelum totidemque sinistra parte secant: quae, quinto est audientior illis, sic: onus inclusum
numero distinctis eodem cura dei, totidemque plagae tellure preannuntur. Quartum quae media est,
non est habitabilis aestus; nix tegit alta duas; totidem inter utramque locavit temperiemque dedit
mixta cum frigore flamma. [4]

Version 2.31 • 11-9-2018

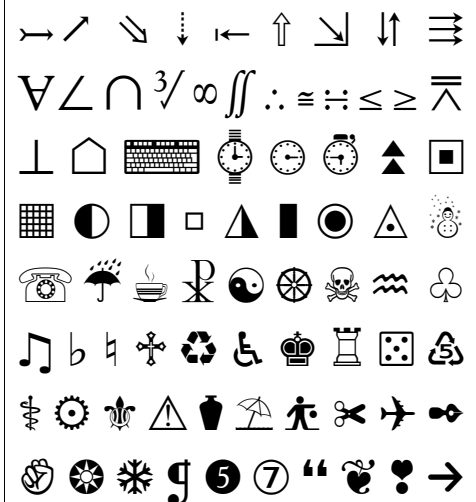
Sukhumala was designed for body text in Buddhist Publications. It is derived from Goudy Scot Mills. "Sukhumāla" is Pāli for "Tender" or "Graceful."

A full range of Latin characters means it can be used for Pali, Sanskrit, Romanised Indic scripts, many European languages, and Vietnamese.

A Basic Greek character set, and a wide range of symbols extend its usefulness to other academic fields such as maths and science. Maths and currency symbols are designed on the figure width.

Superscripts align with the tops of figures, and subscripts bisect the baseline. There are ordinals for lower and upper case: 1st, 2nd, 3rd, 1^{ème} 2^o, 3^ú, and 16^{ths} 25TH. The default line-spacing for 10 point text is 13 points — I recommend using 120% of pointsize unless you're typing Vietnamese, which needs the extra space above the glyphs for accents like Ā.

The font includes a full set of arrows, symbols, dingbats, and stacking fractions for measurements: 1st 2nd etc. A selection of the many symbols is shown below:



Chess: ♔ ♕ ♖ ♗ ♘ ♙ ♚ ♛ ♜ ♝ ♞ ♟

Character Variants

cv ! * + @ ~ † ‡ • © × ○ ● ✱
cv2 !! * + ☎ ~ ☢ ☣ ☤ ☥ ☦ ☧ ☨ ☩ ☪ ☫ ☬ ☭ ☮ ☯ ☰ ☱ ☲ ☳ ☴ ☵ ☶ ☷ ☸ ☹ ☺ ☻ ☼ ☽ ☾ ☿ ☽ ☿ ☽ ☿ ☽ ☿ ☽ ☿ ☽ ☿
cv3 ☁ ☂ ☃ ☄ ★ ☆ ☇ ☈ ☉ ☊ ☋ ☌ ☍ ☎ ☏ ☐ ☑ ☒ ☓ ☔ ☕ ☖ ☗ ☘ ☙ ☚ ☛ ☜ ☝ ☞ ☟ ☠ ☡ ☢ ☣ ☤ ☥ ☦ ☧ ☨ ☩ ☪ ☫ ☬ ☭ ☮ ☯ ☰ ☱ ☲ ☳ ☴ ☵ ☶ ☷ ☸ ☹ ☺ ☻ ☼ ☽ ☾ ☿ ☽ ☿ ☽ ☿ ☽ ☿
cv4 ☉ ☊ ☋ ☌ ☍ ☎ ☏ ☐ ☑ ☒ ☓ ☔ ☕ ☖ ☗ ☘ ☙ ☚ ☛ ☜ ☝ ☞ ☟ ☠ ☡ ☢ ☣ ☤ ☥ ☦ ☧ ☨ ☩ ☪ ☫ ☬ ☭ ☮ ☯ ☰ ☱ ☲ ☳ ☴ ☵ ☶ ☷ ☸ ☹ ☺ ☻ ☼ ☽ ☾ ☿ ☽ ☿ ☽ ☿ ☽ ☿
cv5 ! * + FAX > ☠ ☡ ☢ ☣ ☤ ☥ ☦ ☧ ☨ ☩ ☪ ☫ ☬ ☭ ☮ ☯ ☰ ☱ ☲ ☳ ☴ ☵ ☶ ☷ ☸ ☹ ☺ ☻ ☼ ☽ ☾ ☿ ☽ ☿ ☽ ☿ ☽ ☿